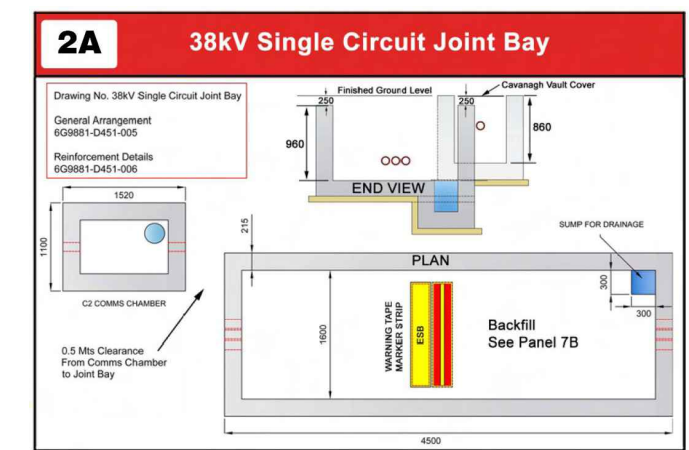
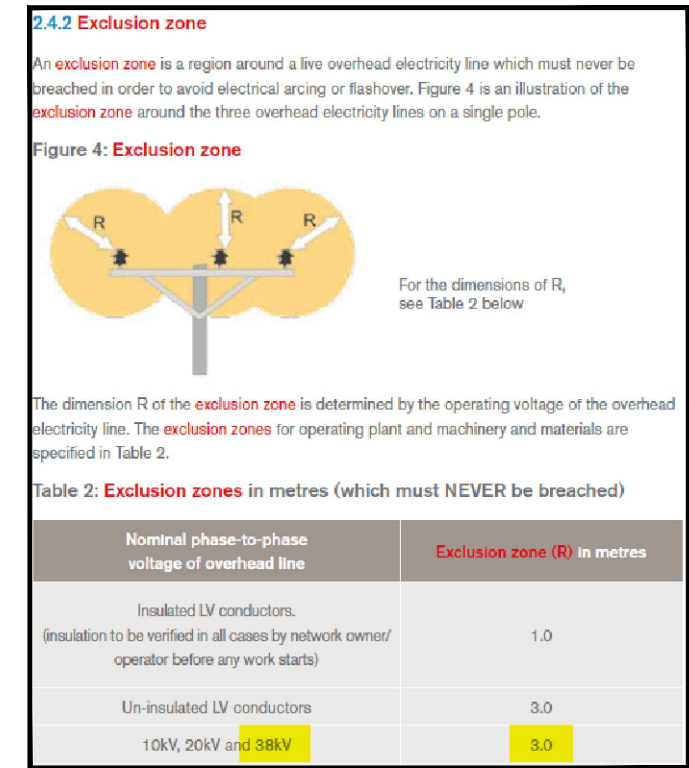
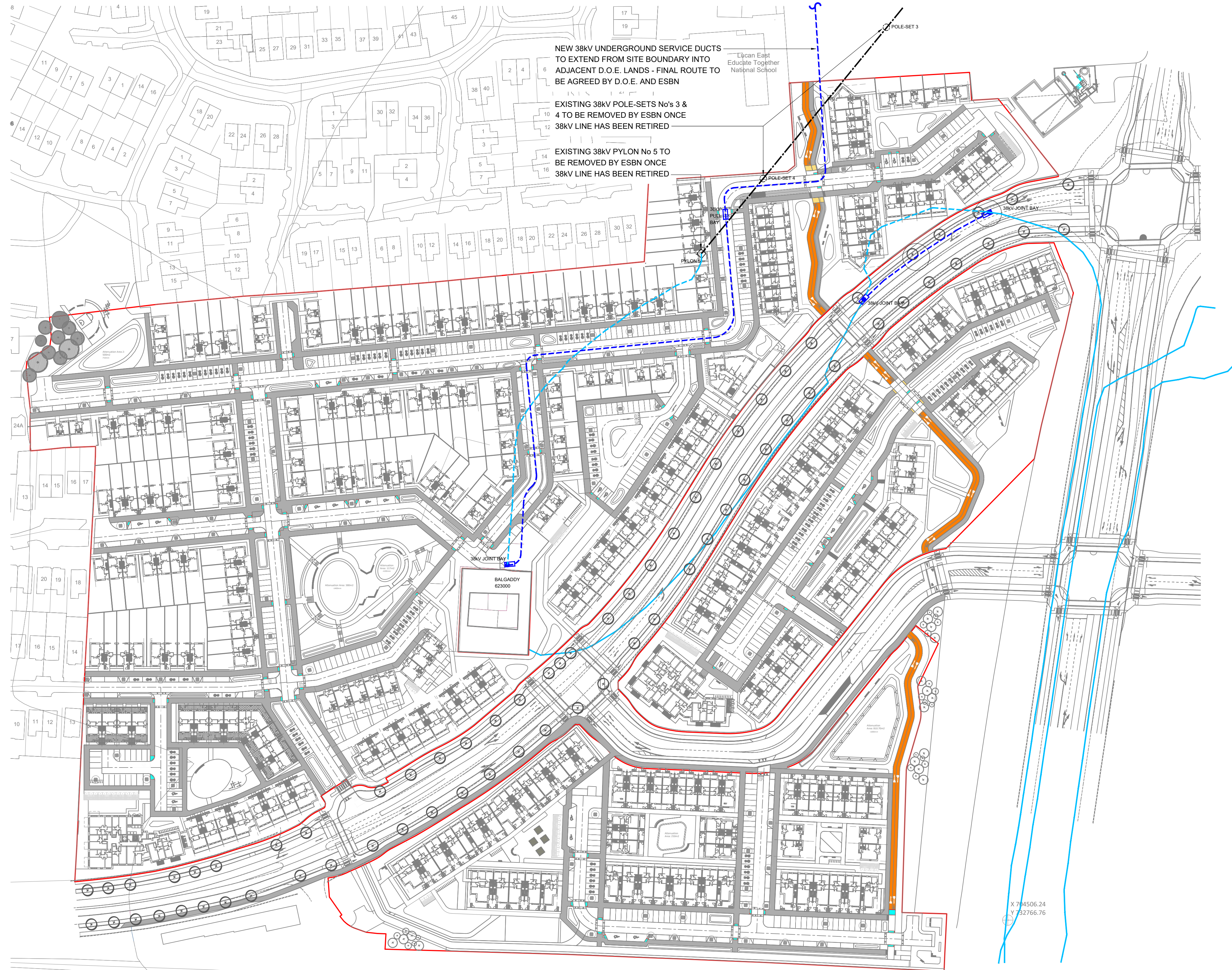


WARNING

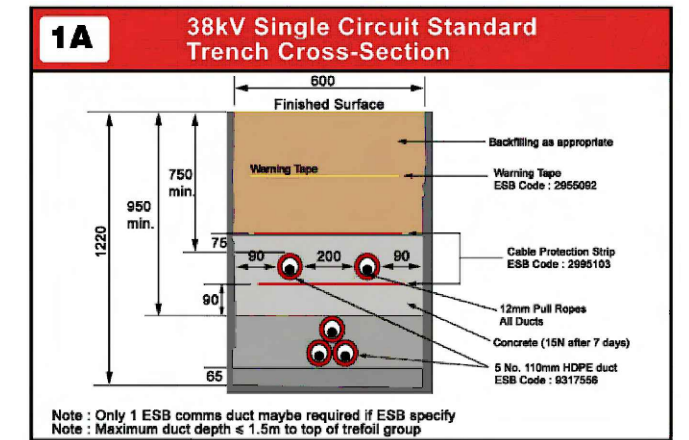
THIS MAP INDICATES THE APPROXIMATE LOCATION OF ESB TRANSMISSION (400KV, 220KV, 110KV, 38KV) AND DISTRIBUTION (20KV, 10KV, 230V/400V) UNDERGROUND CABLES AND OVERHEAD LINES IN THE GENERAL AREA OF THE PROPOSED WORKS. ESB NETWORKS TAKES NO RESPONSIBILITY FOR THE ACCURACY OR COMPLETENESS OF THE MAP. IT IS THE USER'S RESPONSIBILITY TO INDEPENDENTLY VERIFY THE INFORMATION AND THE LOCATION OF UNDERGROUND CABLES AND OVERHEAD LINES. LOW VOLTAGE (230V/400V) SERVICE CABLES (E.G. HOUSE SERVICES, FACTORY/SHOP SERVICES, PUBLIC LIGHTING, JAMP SERVICES, ETC) ARE NOT INCLUDED BUT THEIR PRESENCE SHOULD BE ANTICIPATED. THE DEPTHS OF UNDERGROUND CABLES MUST NEVER BE ASSUMED. ADDITIONAL MORE DETAILED INFORMATION IS AVAILABLE FOR HIGH VOLTAGE TRANSMISSION UNDERGROUND CABLES (38KV, 110KV, 220KV, 400KV) FROM THE LOCAL ESB NETWORKS TRANSMISSION REPRESENTATIVE - SEE ATTACHED LIST FOR CONTACT DETAILS OR CALL 1800 372 757. NO WORK SHOULD BE CARRIED OUT IN THE VICINITY OF 38KV OR HIGHER VOLTAGE UNDERGROUND CABLES WITHOUT PRIOR CONSULTATION WITH ESB NETWORKS. BEFORE ANY MECHANICAL EXCAVATION IS UNDERTAKEN, THE ACTUAL LOCATION OF ALL UNDERGROUND ELECTRICITY CABLES MUST BE ESTABLISHED AND VERIFIED ON THE SITE USING (A) UP-TO-DATE MAP RECORDS, (B) CABLE LOCATOR EQUIPMENT OPERATED IN BOTH POWER AND RADIO MODES, (C) CAREFUL HAND DIGGING OF TRIAL HOLES USING SAFE DIGGING PRACTICE. REFER ALSO TO HSA CODE OF PRACTICE FOR AVOIDING DANGER FROM UNDERGROUND SERVICES. ESB TAKES NO RESPONSIBILITY FOR AND SHALL BEAR NO LIABILITY, HOWSOEVER ARISING, IN RELATION TO ANY DAMAGE, INJURY/DEATH OR LOSS OF SUPPLY AS A RESULT OF DAMAGE OR INTERFERENCE WITH ITS NETWORKS.



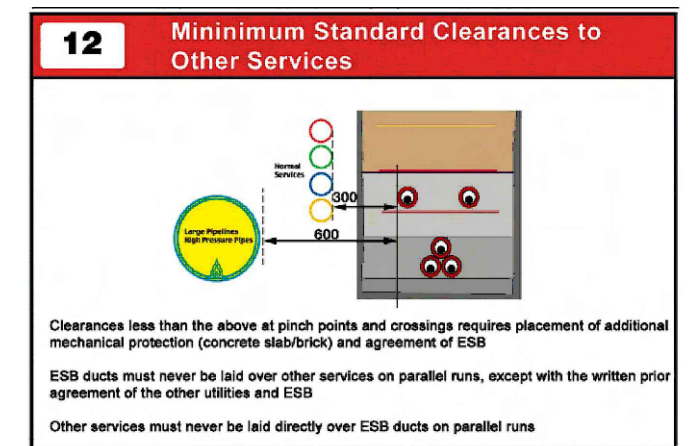
IMAGE OF EXISTING 38KV OVERHEAD SERVICES AT NORTH OF SITE TO BE UNDERGROUNDED



TYPICAL DETAIL INDICATING SINGLE CIRCUIT JOINT BAY REQUIREMENTS FOR 38KV UNDERGROUND SERVICES



TYPICAL DETAIL INDICATING TRENCHING AND DUCTING REQUIREMENTS FOR ESB 38KV UNDERGROUND SERVICES



TYPICAL DETAIL INDICATING SPACING REQUIREMENTS FROM OTHER SERVICES FOR 38KV UNDERGROUND SERVICES

NOTES

- DO NOT SCALE. USE FIGURED DIMENSIONS ONLY.
- MANDE DO NOT TAKE ANY RESPONSIBILITY FOR ANY DISCREPANCIES BETWEEN THIS DRAWING AND WHAT IS INSTALLED ON SITE. FINAL EQUIPMENT VERIFICATION TO BE COMPLETED BY MAIN CONTRACTOR PRIOR TO BREAKING GROUND.
- THIS DRAWING IS TO BE READ IN CONJUNCTION WITH ALL OTHER RELEVANT ARCHITECTURAL AND ENGINEERING DRAWINGS.
- THIS DRAWING IS TO BE READ IN CONJUNCTION WITH ESNB AS-INSTALLED DRAWING "20230905-058_A0.pdf" ISSUED ON THE 5th SEPTEMBER 2023.
- ROUTE OF EXISTING 38KV UNDERGROUND LINES ARE REPLICATED ON THIS DRAWING FROM SURVEY FILE PUM-11647-U-DR-0001-02 COMPLETED BY PRECISION UTILITY MAPPING AND ISSUED ON 27th JUNE 2024.

ESB 38KV SYMBOLS LEGEND

- DENOTES EXISTING 38KV OVERHEAD LINES
- DENOTES EXISTING 38KV UNDERGROUND LINES TO BE REMOVED
- DENOTES EXISTING 38KV UNDERGROUND LINES TO BE RETAINED
- DENOTES NEW 38KV UNDERGROUND DIVERSION

THIS DRAWING IS FOR ILLUSTRATIVE AND DISCUSSION PURPOSES ONLY WITH ESB NETWORKS - FINAL DIVERSION WORKS FOR ALL ESB SERVICES ASSOCIATED WITH BALGADDY SUBSTATION TO BE CONFIRMED AND PROVIDED BY ESB NETWORKS.

PL1	ISSUED FOR PLANNING	KP	KP	DC	08/05/2024
G	ISSUED FOR DESIGN DEVELOPMENT	KP	KP	DC	24/02/2024
F	ISSUED FOR DESIGN DEVELOPMENT	KP	KP	DC	01/08/2024
E	ISSUED FOR DESIGN DEVELOPMENT	KP	KP	DC	09/05/2024
D	ISSUED FOR DESIGN DEVELOPMENT	KP	KP	DC	30/04/2024
C	ISSUED FOR DISCUSSION	KP	KP	DC	14/03/2024
B	ISSUED FOR DISCUSSION	KP	KP	DC	08/03/2024
A	ISSUED FOR DISCUSSION	KP	KP	DC	14/02/2024
ISSUE	DESCRIPTION	DRN	ORIG	APP	DATE

CLIENT SOUTH DUBLIN COUNTY COUNCIL

MANDE CONSULTING ENGINEERS Unit 4 Oak Close Western Business Park Dublin 12. D12 R8C6 T: (01) 4508485 W: www.mande.ie E: info@mande.ie

PROJECT KISHOGE PART 10 APPLICATION SITE 3, CLONBURRIS, Co. DUBLIN

TITLE SITE 3 PLAN ESB 38KV DIVERSION LAYOUT

PROJECT No.	20026	DATE:	JANUARY 2024
A1	SCALE 1:1000	DRG No.	KSG3-MAE-00-XX-DR-E-6011